



TIIG

INJURY SURVEILLANCE IN THE NORTH WEST OF ENGLAND

Injury attendances to Tameside General Hospital Emergency Department

April 2012 to March 2013

This report summarises recorded injury attendances to Tameside Emergency Department (ED) between April 2012 and March 2013.

Between April 2012 and March 2013 there were 77,153 injury attendances to Tameside ED. Females accounted for just over half (51%) of all attendances. The month with the highest attendances for injury was May (n=6,879) with February having the lowest (n=6,044) (**Figure 1**). The majority (88%) of attendances were recorded as other injury; falls accounted for the highest proportion (6%) of specified injury groups followed by road traffic collisions (RTCs) (2%) (**Table 1**).

For all injuries the highest proportion of attendances were for persons aged 20 to 34 (22%) and 65 plus years (21%) (**Figure 2**). Over a third (36%) of fall injury attendances were by persons aged 65 or over. Just over two-fifths (41%) of RTC attendances were for persons aged 20 to 34. Over a half (55%) of all sports injury attendances were for persons aged 5 to 19 with just over a third (34%) aged between 20 and 34 (**Figure 3**).

Table 2 shows the ethnicity of injury attendees to Tameside ED. Close to nine in ten (86%) were white and 2% were Pakistani.

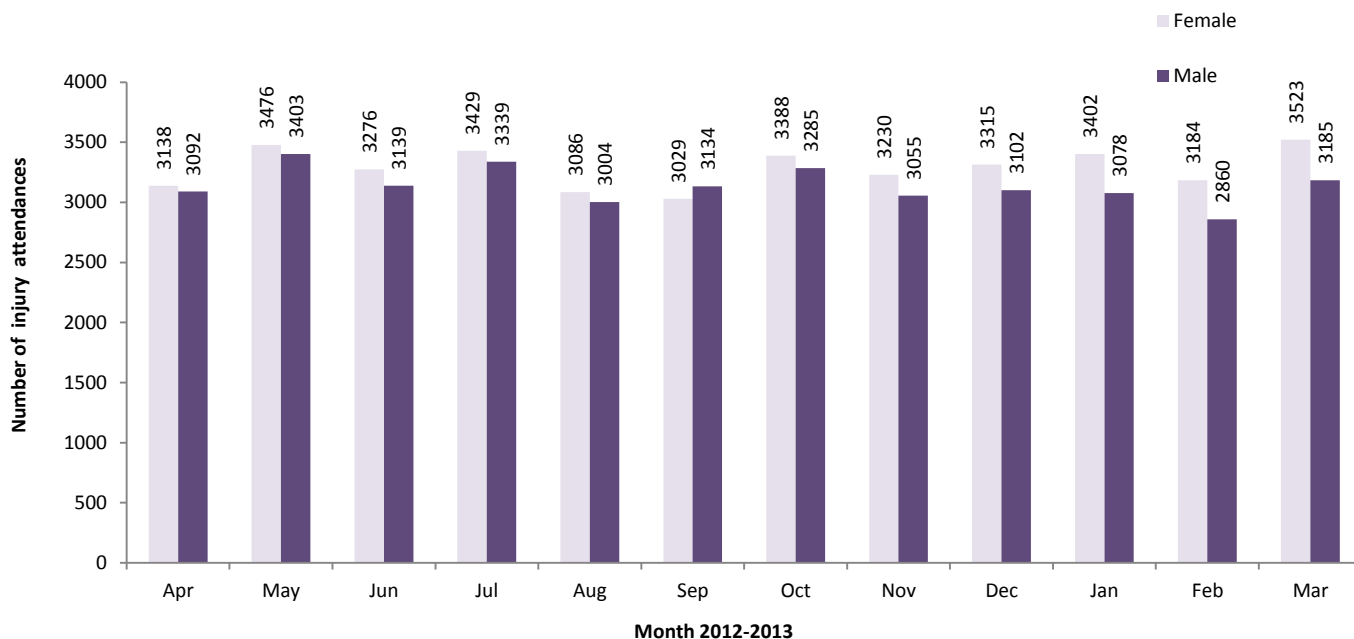
The disposal of a patient can give an indication of the severity of the injuries sustained. Most

attendees were referred for further treatment (57%), over a quarter (26%) were admitted and 12% were discharged (**Table 3**). Nearly two-fifths (39%) of deliberate self-harm (DSH) attendees and almost three in ten (29%) of alcohol-related attendances were admitted. Close to three quarters (73%) of sports injury attendances were referred. A quarter (25%) of RTC attendances were discharged (**Table 4**).

Table 5 shows the arrival method of injury attendances at Tameside ED. Nearly a third (32%) of attendees arrived by ambulance.

Table 6 shows assault attendances to Tameside ED. Almost seven in ten (69%) of assault attendees were male, and over two-fifths (44%) were aged 20 to 34. Over two-fifths (44%) of assault attendees arrived at the ED by ambulance.

Figure 1: Tameside ED: Total injury attendances by gender and month, April 2012 to March 2013*



*There was one attendance where gender was recorded as unknown

Table 1: Tameside ED: Total injury attendances by injury group and month, April 2012 to March 2013

Injury group	Apr	May	Jun	Jul	Aug	Sep	Oct	Nov	Dec	Jan	Feb	Mar	Total	%
Other	5400	6008	5579	5918	5296	5323	5758	5543	5648	5694	5431	6013	67611	88
Fall	402	417	449	416	373	394	402	371	392	494	324	345	4779	6
RTC	128	158	116	134	128	138	162	92	138	77	91	117	1479	2
Sports injury	95	122	84	89	75	114	147	87	48	52	69	86	1068	1
Assault	85	84	85	92	74	79	86	75	101	65	52	69	947	1
DSH	71	63	64	70	93	63	78	73	53	62	61	51	802	1
Alcohol related	39	21	25	27	38	44	29	31	26	29	10	17	336	0
Not recorded	10	6	13	23	13	8	11	13	11	7	6	10	131	0
Total	6230	6879	6415	6769	6090	6163	6673	6285	6417	6480	6044	6708	77153	100

Figure 2: Tameside ED: Total injury attendances by age group and month, April 2012 to March 2013

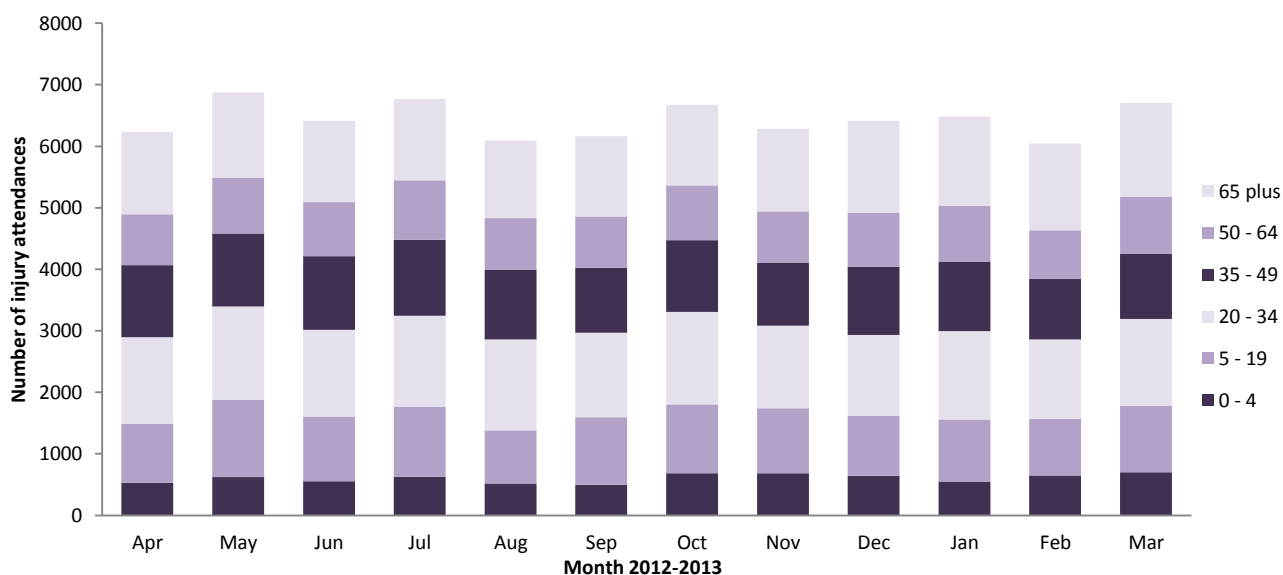


Figure 3: Tameside ED: Total injury attendances by age group and injury group (excluding other injury and not recorded), April 2012 to March 2013

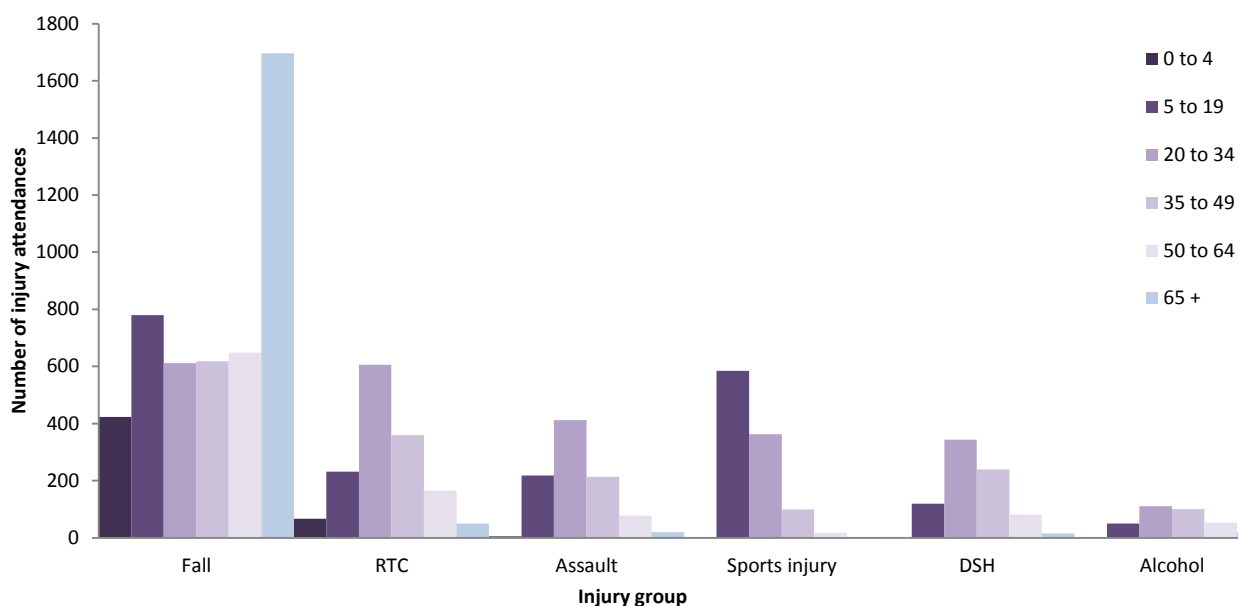


Table 2: Tameside ED: Total injury attendances by ethnicity and month, April 2012 to March 2013¹

Ethnicity	Apr	May	Jun	Jul	Aug	Sep	Oct	Nov	Dec	Jan	Feb	Mar	Total	%
White	5358	5917	5564	5855	5266	5286	5714	5401	5470	5581	5170	5821	66403	86
Not collected	366	429	376	391	406	391	427	385	411	390	362	393	4727	6
Pakistani	122	135	126	141	124	112	129	112	124	112	107	107	1451	2
Any other group	81	108	69	80	71	91	96	99	101	129	117	117	1159	2
Bangladeshi	96	93	81	101	66	87	96	93	101	88	92	80	1074	1
Indian	71	66	72	59	49	54	59	44	56	54	54	56	694	1
Mixed	53	55	59	58	36	47	43	54	60	43	45	53	606	1
Not stated	27	27	28	32	17	41	62	46	47	42	37	31	437	1
Black	34	34	25	33	41	28	26	29	37	27	32	29	375	0
Asian other	13	6	10	9	6	19	<20	10	<10	<15	12	8	128	0
Chinese	9	9	5	10	8	7	***	12	***	***	16	13	99	0
Total	6230	6879	6415	6769	6090	6163	6673	6285	6417	6480	6044	6708	77153	100

Table 3: Tameside ED: Total injury attendances by method of disposal and month, April 2012 to March 2013²

Disposal	Apr	May	Jun	Jul	Aug	Sep	Oct	Nov	Dec	Jan	Feb	Mar	Total	%
Referral/follow-up	3642	3869	3720	3989	3484	3503	3809	3650	3507	3622	3449	3666	43910	57
Admitted	1549	1660	1573	1630	1557	1544	1733	1625	1793	1776	1641	1853	19934	26
Discharged	757	945	768	790	690	760	786	729	779	752	603	768	9127	12
Other	282	405	354	360	359	356	345	281	338	330	351	421	4182	5
Total	6230	6879	6415	6769	6090	6163	6673	6285	6417	6480	6044	6708	77153	100

¹ Please note that all numbers less than five have been suppressed in line with patient confidentiality and if there is only one number <5 in category then two numbers will be suppressed at the next level.

² Admitted=admitted to ED bed/became a lodged patient of the same health care provider; Discharged=discharged - did not require any follow up treatment; Referred=discharged - follow up treatment to be provided by GP, referred to ED clinic, referred to fracture clinic, referred to other out-patient clinic, transferred to other health care provider, referred to other health care professional; Other=died in department, left department before being treated, left department having refused treatment, other.

Table 4: Tameside ED: Total injury attendances by method of disposal and injury group (excluding other injury and not recorded), April 2012 to March 2013

Disposal	Alcohol related		Assault		Fall		RTC		DSH		Sports injury		Total	
	n	%	n	%	n	%	n	%	n	%	n	%	n	%
Discharged	20	6	124	13	776	16	376	25	16	2	235	22	1547	16
Referral/follow-up	151	45	583	62	3053	64	948	64	348	43	775	73	5858	62
Admitted	98	29	73	8	755	16	58	4	311	39	32	3	1327	14
Other	67	20	167	18	195	4	97	7	127	16	26	2	679	7
Total	336	100	947	100	4779	100	1479	100	802	100	1068	100	9411	100

Table 5: Tameside ED: Total injury attendances by mode of arrival and month, April 2012 to March 2013

Arrival mode	Apr	May	Jun	Jul	Aug	Sep	Oct	Nov	Dec	Jan	Feb	Mar	Total	%
Other	4234	4785	4494	4717	4216	4208	4605	4246	4135	4273	3974	4458	52345	68
Ambulance	1996	2094	1921	2052	1874	1955	2068	2039	2282	2207	2070	2250	24808	32
Total	6230	6879	6415	6769	6090	6163	6673	6285	6417	6480	6044	6708	77153	100

Table 6: Tameside General Hospital ED: Assault attendances by gender, mode of arrival and age group, April 2012 to March 2013

Injury type	Assault attendees (n=947)		All injuries % (n=77,153)
	n	%	%
Gender			
Female	291	31	51
Male	656	69	49
Arrival Mode			
Ambulance	415	44	32
Other	532	56	68
Age group			
0 - 4	5	1	9
5 - 19	218	23	16
20 - 34	412	44	22
35 - 49	214	23	17
50 - 64	78	8	14
65 plus	20	2	21

Published November 2013

Jennifer Brizell (TIIG researcher)

Centre for Public Health, Faculty of Education, Health and Community, Liverpool John Moores University
2nd Floor, Henry Cotton Campus, 15-21 Webster Street, Liverpool, L3 2ET

Tel: 0151 231 4500 Email: j.s.brizell@ljmu.ac.uk

Website: www.tiig.info (please note all data requests should be made through the TIIG website)

Twitter: @TIIG_CPH